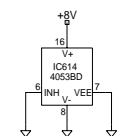
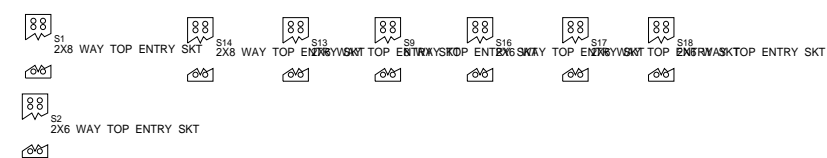
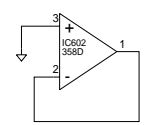
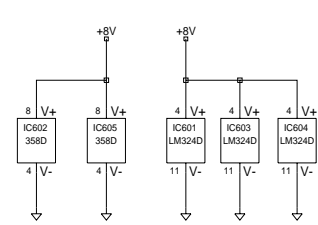
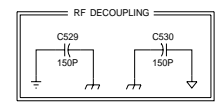
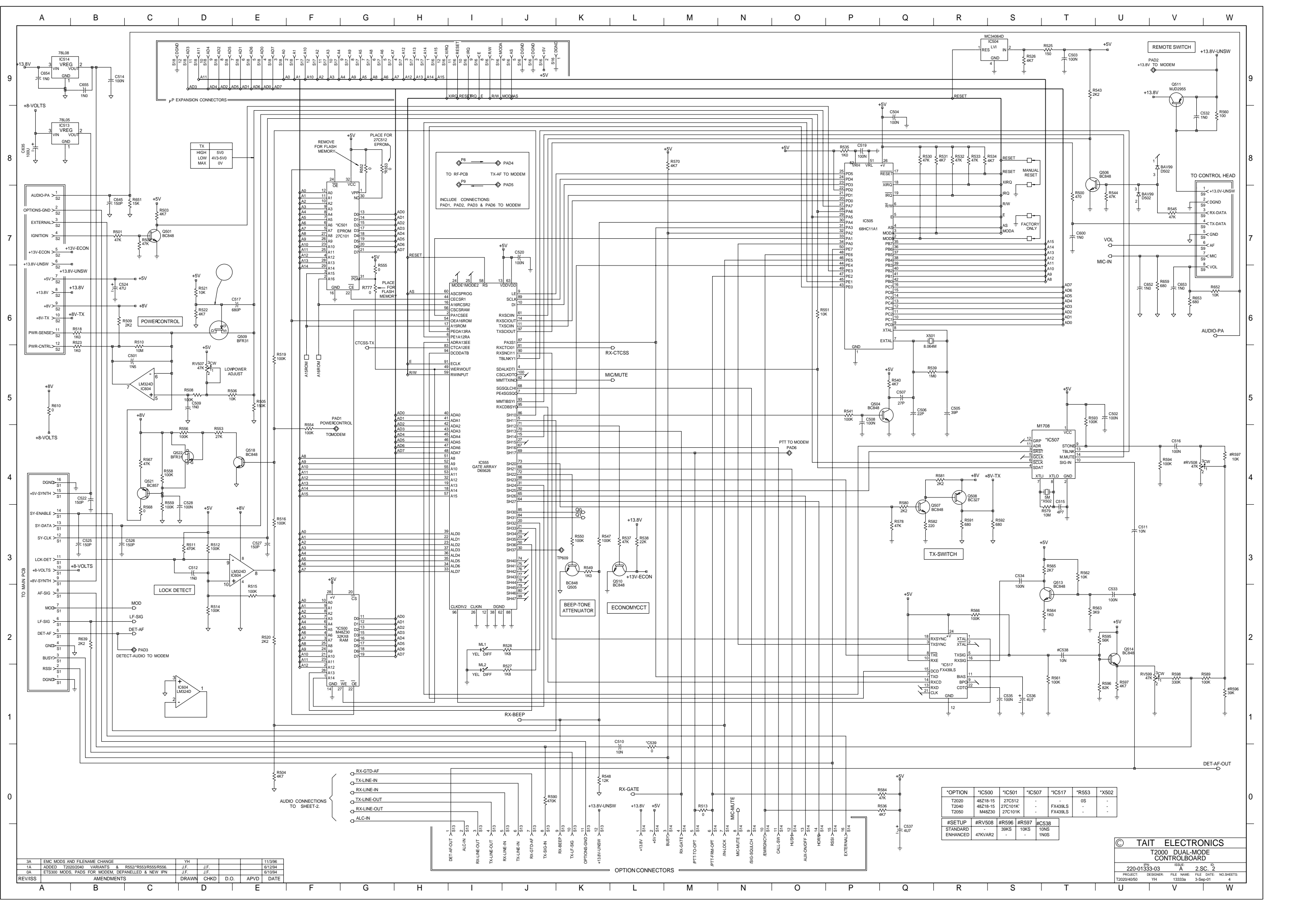


DUAL-MODE PCB AUDIO CCTRY



3A	EMC MODIFICATIONS	YH	15/1/96
1A	ADDED T2020/T2040 VARIANTS & R552/R553/R555/R556	J.F.	8/12/94
0A	ETS300 MODS, PHOS FOR MODEM, DEPANELLED & NEW PIN	J.F.	8/10/94
REV/ISS	AMENDMENTS	DRAWN	CHKD
		D.O.	APVD
			DATE

© TAIT ELECTRONICS			
T2000 DUAL-MODE AUDIO CCTRY			
IPN:	ISSUE:	IS:	IS:
220-01333-03	A	2	SC. 1
PROJECT:	DESIGNER:	FILE NAME:	FILE DATE:
T2000/4050	YH	13333A	3-Sep-91
			NO SHEETS: 4



3A	EMC MODS AND FILENAME CHANGE	YH	JF	11/3/96
1A	ADDED T2020/2040 VARIANTS & R552/R553/R555/R556	J.F.	J.F.	8/12/94
0A	ETS300 MODS, PADS FOR MODEM, DEPANELLED & NEW IPN	J.F.	J.F.	8/10/94
REV/ISS	AMENDMENTS	DRAWN	CHKD	D.O.
		APVD	DATE	

*OPTION	*IC500	*IC501	*IC507	*IC517	*R553	*X502
T2020	48218-15	27C512	-	-	0S	-
T2040	48218-15	27C101K	-	FX439LS	-	-
T2050	M48230	27C101K	-	FX439LS	-	-

#SETUP	#RV508	#R596	#R597	IC538
STANDARD	-	39KS	10KS	10NS
ENHANCED	47KVAR2	-	-	1NDS

© TAIT ELECTRONICS  
 T2000 DUAL-MODE CONTROL BOARD  
 PROJECT: 220-01333-03  
 DESIGNER: YH  
 FILE NAME: 13333A  
 FILE DATE: 3-5ep-91  
 ISSUE: A  
 NO SHEETS: 4  
 SHEET: 2 SC. 2

